



CANFIELD GARDENS

LONDON
NW6 3BS

LEASEHOLD

ASKING PRICE £685,000
SUBJECT TO CONTRACT

* VIDEO TOUR AVAILABLE *

A first floor very large three bedroom apartment, located adjacent to Finchley Road tube station. The apartment features three huge bedrooms en suite bathroom/WC and a further bathroom and separate WC. Reception room and fully fitted kitchen. Offered in excellent decorative condition and fully furnished.



FEATURES

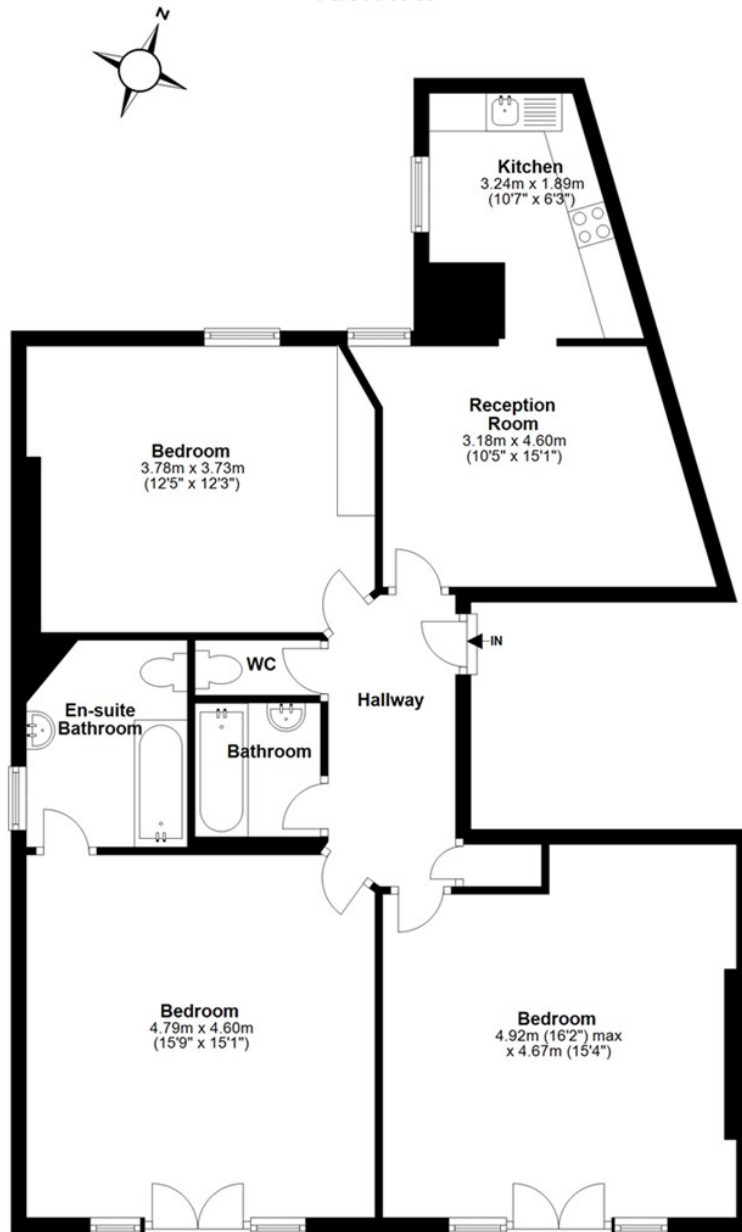
VIDEO TOUR:

SERVICE CHARGE: £

TENURE: Leasehold

COUNCIL TAX: E

First Floor



Total area: approx. 100.4 sq. metres (1080.6 sq. feet)



Energy Efficiency Rating		
	Current	Potential
Very energy efficient - lower running costs		
(92 plus) A		
(81-91) B		
(69-80) C		
(55-68) D		
(39-54) E		
(21-38) F		
(1-20) G		
Not energy efficient - higher running costs		
England & Wales	EU Directive 2002/91/EC	



IMPORTANT NOTICE

Whilst every attempt has been made to ensure the accuracy of these details and floor plans contained here, measurements of doors, windows and rooms are approximate and no responsibility is taken for any error, omission or mis-statement. These plans and details are for representation only as defined by RICS code of measuring practice and should be used as such by any prospective purchaser.

Not to scale. Copyright: RHW Estates